

HOME

FLOORING

COLLECTION



Corkcomfort

Vinylcomfort

Nature at your feet



WICANDERS®



Acrodur - Yours purely

Amorim Revestimentos, the world leader in cork flooring, and BASF, the renowned international chemical company, have merged their vast experience to create a highly innovative product for cork flooring and wall coverings.

Acrodur is the name of the new water-based binder developed by BASF, with unrivaled environmental performance. This binder reduces the level of non-green emissions (during manufacturing and after the installation of the final product) and fosters a more rational use of energy, without compromising the coverings' performance.

Acrodur is free of chemical substances such as phenol, formaldehyde or isocyanates that are usually present in similar products. **Wicanders'** association to BASF strengthens its sustainable and eco-efficient nature.

With this revolutionary product, **Wicanders** not only promotes balance between economy and the environment but also provides perfect harmony between nature and the comfort of contemporary ambiances.

Truly sustainable development.....



Yours Purely,



Think green, **choose** Wicanders

Wicanders products underwent a detailed eco-efficiency study in 2007, carried out by the highly regarded chemical company, BASF.

The study, based on a comparative analysis with several other types of flooring, illustrated the excellent environmental performance of **Wicanders** products and its manufacturing process. Besides the smaller amounts of energy and raw materials required for the manufacturing process, these products actively contribute to reducing global warming, not only through their low emissions, but also due to cork's natural property of retaining CO₂.

This study also highlighted irrefutable advantages for the consumer. Cork's natural thermal insulation characteristics ensure that **Wicanders** products represent significant savings for the consumer in energy costs. These are values that re-assure the excellence of **Wicanders** flooring and their impact on protecting the planet and the world economy.

Your future in good hands!

Wicanders is a truly sustainable brand! The starting point is a raw material that is extracted cyclically from the cork oak trees without ever damaging or cutting them. This raw material is then transformed into products of high added value while biodiversity, economic and social sustainability are simultaneously fostered.

Wicanders also looks out for your future! Its products retain CO₂, which would otherwise contribute to global warming. It is estimated that the Portuguese cork oak forest – montado – is responsible for retaining 5% of the country's annual CO₂ emission, representing 4.8 million tons per year.





Excellence in flooring



Who we are

Amorim Revestimentos, a company of the Portuguese Amorim Group, with over 130 years of experience in selected cork products, has developed unique flooring and wall covering solutions throughout its history. Amorim Revestimentos sells its products in more than 51 countries and is known throughout the world as a pioneer in creating top-quality, ground-breaking solutions.

Reflecting a highly sustainable development, the Amorim Group developed a revolutionary process that is adapted to nature's rhythms. The first extraction of cork from the cork oak tree occurs only twenty-five years after planting, following which it is harvested in nine-year cycles, without ever damaging the tree in any way. This method allows the cork oak forest – montado - to fulfill its role of fixing CO₂, thus actively contributing to reduce global warming.

The regular extraction of cork is also a decisive contributor to sustainability: environmental (conserving biodiversity and preventing desertification), social (population settlement and jobs creation) and economic. The company's in-depth knowledge and respect for nature, its continuous investment in technological innovation and highly-specialized staff, have guaranteed its leading position in the international field.

Wicanders has strengthened its existing cork products (**Corkcomfort**) and wood-on-cork products (**Woodcomfort**), by investing in new product lines such as vinyl (**Vinylcomfort**) and linoleum (**Linocomfort**), towards a new phase marked by the evolution from a cork manufacturer to a flooring solutions company.

Cutting-edge technology, know-how, creativity and audacity are merged into an avant-garde approach inspired by nature's values.





Meet the **Cork**comfort Sensations

Founded by the most advanced technological innovation and ongoing research of current trends and requirements, the new **Cork**comfort product line has allowed **Wicanders** to create a new flooring philosophy, revolutionizing cork floors' traditional concept. **Cork**comfort brings to life ceramic, stone, metal and leather patterns, enhancing cork's role in interior design. New attributes emerge, as this collection reinterprets style, elegance and the sophistication of different materials. The result is an infinite palette of remarkable surfaces with innovative dimensions (i.e. 24 x 18 inches), allowing the creation of the most diverse range of environments, enriched by the unique qualities and visual elegance of cork. **Cork**comfort is also enhanced with advanced texturing, staining and beveling processes that provide depth and intensity to any space, ensuring the versatility of any choice.

Corkcomfort starts out a new approach in design, in harmony with nature and human expression.

The **Cork**comfort product line was created by a team of experts and trendsetters composed of designers, architects and marketers.

It is inspired by the unique patterns, textures and colors of nature. Alive with attractive compositions, this collection suits your lifestyle providing you with lively spaces to work or rest, and share with others.

Choose your own nature





Rural elegance



Corkcomfort visuals

Unique effects and nuances suggest the return to nature through spaces steeped in organic sensations. A timeless comfort that returns pure elegance and sophistication to daily life.



Slate Caffè
24"x18"

C81A001



Slate Moccaccino
24"x18"

C81C001



Originals Natural
36"x12"

O801007



Originals Harmony
36"x12"

O821005
O121001



Originals Symphony
36"x12"

O830003



Originals Accent
36"x12"

O841002
O141001



Originals Dawn
36"x12"

O849003



President Chocolate Brown
36"x4.5"

F831001*



Originals Accent
36"x4.5"

O841004*



Originals Character
36"x4.5"

O822005*



* beveled



Luminous poetry



Corkcomfort visuals

The smoothness of a natural floor combined with romantic patterns encourages refined luxury, sketching out poetic atmospheres leading us into dreams.



Slate Tawny
24"x18"

C81E001



Linn Blush
24"x18"

C81O001



Identity Timide
36"x12"

I102003



Identity Eden
36"x12"

I806002



Identity Timide



Metallic audacity



Corkcomfort visuals

Extravagant designs inspired by fashion trends provide metallic looks and exceptional visual effects. Atmospheres intensified by dark shades, combining deep and captivating colors, are draped in glamour, creating perfect environments.



Petra Negro
24"x18"

C81R001



Pebbles Storm
24"x18"

C11W001*



Pebbles Metallic
24"x18"

C11V001*



Pebbles Autumn
24"x18"

C11S001*



Nuances Mele
24"x18"

C82I001



Personality Tea
36"x12"

P810002



Identity Tea
36"x12"

I810002
I110002



Identity Silver
36"x12"

I803002



Identity Spice
36"x12"

I108003



Moods Tea
36"x4.5"

L810001*



Traces Spice
36"x4.5"

Q808002*



President Spice
36"x4.5"

F808001*



President Tea
36"x4.5"

F810001*



* beveled



Urban expressions



Corkcomfort visuals

Surfaces with strong textures give shape to expressive ambiances full of contrasts and vibrant colors. Our floors that represent an urban and trendy identity that challenge even the most daring personality.



Pebbles Rain
24"x18"

C11T001*



Scoria Pine
24"x18"

C81K001



Slate Algae
24"x18"

C81F001



Personality Chestnut
36"x12"

P832002



Personality Caramel
36"x12"

P833002



Identity Chestnut
36"x12"

I132003



Moods Chestnut
36"x4.5"

L832001*



Moods Auburn
36"x4.5"

L836001*



Traces Chestnut
36"x4.5"

Q832001*



Traces Auburn
36"x4.5"

Q836002*



President Chestnut
36"x4.5"

F832002*



Identity Tenné
36"x12"

I836001



* beveled



Explore our essence



THERE'S NO PLACE LIKE HOME

Your home should be a space of internal balance, a place of pleasant re-discovery after a challenging day's work. Cork's natural properties make it an excellent sound insulator, diminishing the sounds that disturb moments of relaxation and family sharing.

A WARM RESORT

We take care of the cork oak forests (montado) and from them take the essence of comforting atmospheres. Cork, a remarkable thermal insulator, inspires tranquil and comfortable environments, granting energy cost savings. Like a hug from nature, your home becomes an enveloping retreat that exhales comforting and soothing heat for the daily renewal of body and mind.

EASY TO WALK ON

It is a proven fact that hard surfaces worsen feet and back injuries in urban societies. A study of the **Corkcomfort** products, carried out by Valencia Biomechanics Institute, illustrates their effective biomechanical performance and influence on the balanced posture of the human body.

Wicanders products are sufficiently soft to reduce impact on the joints and back and sufficiently stable to reduce fatigue, therefore promoting ideal conditions for a healthy life in a comfortable and embracing environment.

A GIFT FROM NATURE

Cork is born from nature. It is one of the most complete materials for the creation of safe, comfortable and inspiring environments. **Corkcomfort**, adapted to the needs of modern society, reinterprets cork's applications, offering revolutionary flooring based on quality, innovative design and cutting-edge technology.

Perfect solutions that live in harmony with nature and your lifestyle.





PROTECT THE FUTURE OF YOUR LOVED ONES

The sustainable feature of **Cork**comfort product line represents a fundamental contribution to the preservation of the planet, since it plays an important role in reducing global warming. The FSC (Forest Stewardship Council) certification for forest management system is an unquestionable proof, along with other certifications, of the sustainability of such coverings, reinforcing their excellence. A commitment undertaken to nature, on behalf of a protected future for you and your loved ones.

LIVE AN INTELLIGENT LIFE

Corkcomfort product line is recyclable and environmentally friendly, positively contributing to CO₂ fixation. A new water-based binder – Acrodur - has been developed to reinforce its environmental component, reducing the level of non-green emissions. Its insulating properties also generate energy savings for consumers. It is the ideal product for those who are truly nature lovers.

OUTSTANDING DESIGNS FOR A PERFECT CHOICE

The vibrant designs of the **Cork**comfort product line, which are available in a wide range of textures, colors and finishes, create the most diverse and surprising effects, adapted to each personality and lifestyle.

Classic or extravagant, elegant or trendy, the combinations offer total freedom in tailor-made design creations.

FREE YOUR WISHES

Corkcomfort floors are highly resistant and safe thanks to their anti-slip and scratch resistant properties. These properties provide environments for sharing and living life fully, ensuring that such floors remain good looking over the years. Feel free to live your space.

MAKE YOUR LIFE EASIER

Quick and easy to install, **Cork**comfort flooring transforms your environment without interfering with your routine. The functional, hygienic and easy maintenance of this flooring make it the ideal choice for a relaxing and safe day-to-day life. Your loved ones' health and yours is protected, leaving you without concerns and giving you more time to enjoy the sensations of an environment designed exactly as you wished.





Vinylcomfort

Setting **new standards** for flooring

As a result of advanced technological research, this new flooring for public and private areas has changed the way we envision spaces, suggesting a more liberating and inspiring experience.

Following the latest trends in flooring, **Vinylcomfort** is a new concept in Luxury Vinyl Tile (LVT) floating floors, surpassing existing glue-down floor solutions and other similar surfaces. Positioned as a forerunner in the vanguard of vinyl flooring for residential and commercial environments, **Vinylcomfort** combines a strong design element with the benefits of an innovative structure supported by a double cork layer. The new **Vinylcomfort** collection has revolutionized the range of avant-garde flooring solutions by perfectly interpreting the textures and patterns of noble hardwoods, exotic stones and innovative materials, offering numerous choices in the creation of comfortable and distinctive atmospheres, achieving a perfect match between sustainability and breakthrough solutions.



A new era for vinyl flooring

With solid technological know-how in developing cork-based flooring, **Wicanders** has innovated in the vinyl flooring market, presenting a pioneering product for home and commercial spaces.

Thanks to its unique characteristics, **Vinylcomfort** is distinguished from traditional glue-down LVT floors by presenting itself in a floating solution, being also superior to other existing vinyl floating solutions, due to a more advanced structure that incorporates an additional cork layer. The natural characteristics of cork provide greater walking comfort, as well as improved acoustic properties. The double cork layer also plays a fundamental role in providing heat insulation, offering you unrivalled comfort with reduced energy costs, improving eco-efficiency.

Vinylcomfort's excellence is enhanced by the nobility of its visuals. Advanced techniques allow the beauty and texture of various materials to be re-invented, resulting in a stylish collection. Furthermore, innovative features and dimensions, not available in similar competitor products, enrich this collection even more.

The advantages of this product are not limited to aesthetics, also inviting you to enjoy your time. Providing you with a fast and easy installation, it doesn't require a complex subfloor preparation or the use of adhesives that represent increased costs, time consumption and environmental harm.

From production to installation, **Vinylcomfort** stands out for its exceptional design and excellent performance. Developed for areas where fashion, durability and cleanliness of the floor are decisive factors, this line exceeds all the expectations of interior designers, architects and builders. Surprising ambiances can be created at reasonable cost and within a short period of time. After installation, **Vinylcomfort** confirms its efficiency, ensuring many years of easy maintenance and proven resistance to wear and tear.



Palisander

Chalk Oak

Provence
Oak



Explore our essence



Your design for life

FEEL NATURAL

Natural and realistic effects

The matte surface, combined with a wide range of patterns, allows a true material interpretation with effects capable of inspiring unique sensations. The wood visual panels present a more realistic hardwood flooring format.

FEEL UNIQUE

Endless options

Architects and interior designers now have at their disposal a unique collection inspired by nature. Following the latest trends on diverse surfaces such as wood, concrete, ceramics, aged metal or natural stone, **Vinylcomfort** exhibits genuine textures felt through a simple look. Create sophisticated or rustic ambiances in new or renovated spaces.

FEEL SAFE

A long-lasting surface

Extremely resistant to intense everyday wear and tear, **Vinylcomfort** is your floor for life.

Your time

FEEL POWERFUL

We create, you live

Vinylcomfort saves you time and money. Quick and easy to install, with the **CORKLOC®** system you are able to transform your environment without interfering with your day-to-day. Commercial spaces can benefit from a complete overnight transformation without having to close, because **Vinylcomfort** flooring does not require adhesives or complex subfloor preparation. Furthermore, this product comes with an all around edge sealing for increased moisture protection.

FEEL FREE

Extra time in your day

Thanks to its easy maintenance, **Vinylcomfort** does not require any special care, providing you with the time and freedom to do what you really like. With a sophisticated look, high performance and durability, this is the floor that invites you to enjoy life.



Smoked Oak Alaska Oak

European
Oak

Your well-being

FEEL RELAXED

Quiet environments

It is a well known fact that noise contributes to stress. Constructed with a double cork layer, **Vinylcomfort** offers remarkable sound reduction, promoting a harmonious and relaxing environment.

FEEL WARM

Welcoming environments

The natural properties of cork play a fundamental role in providing heat insulation, offering you unrivalled comfort and hospitality with reduced energy costs. A benefit not only to your investment, but to your health as well.

FEEL COMFORTABLE

Comfort that walks alongside you

Vinylcomfort was designed to provide comfort in the most demanding environments. The double cork layer is soft enough to reduce the impact on your joints and back, allowing you to enjoy natural comfort in the simple act of walking.



Vinylcomfort visuals

Inspired by nature and fashion, realistic wood and stone visuals merge in a collection of intricate design.



Alaska Oak

BOQ0001



Chalk Oak

BOQ1001



European Oak

BOQ2001



Provence Oak

BOQ3001



Canyon Oak

BOQ4001



Smoked Oak

BOQ5001



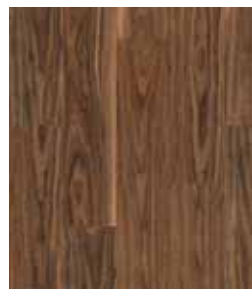
Amber Cherry

BOQ7001



Cherry

BOQ6001



American Walnut

BOQ9001



Palisander

BOQ8001



Bianco Travertine

BOO2001



Volcanic Ash

BOO3001



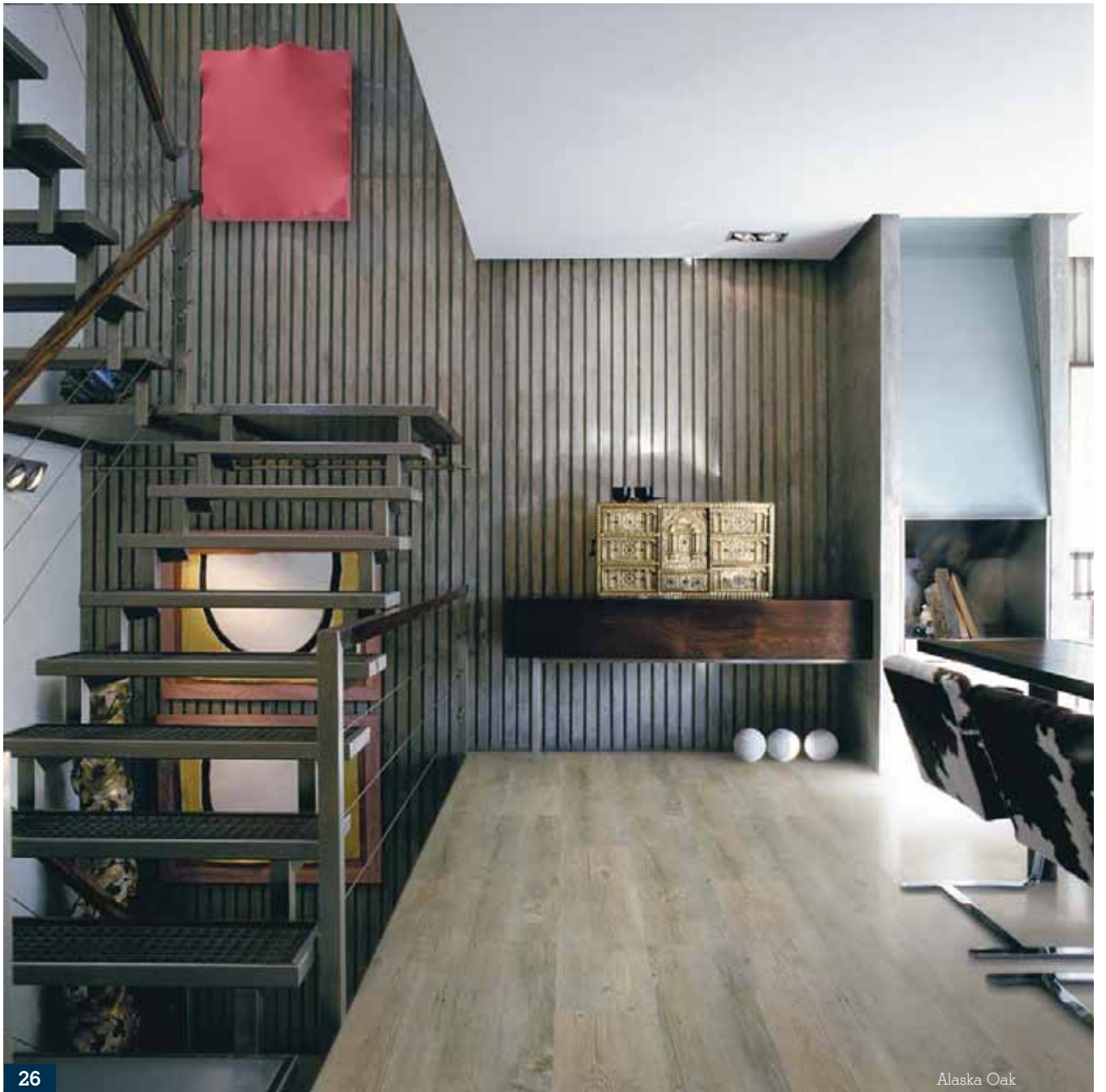
Raw Umber

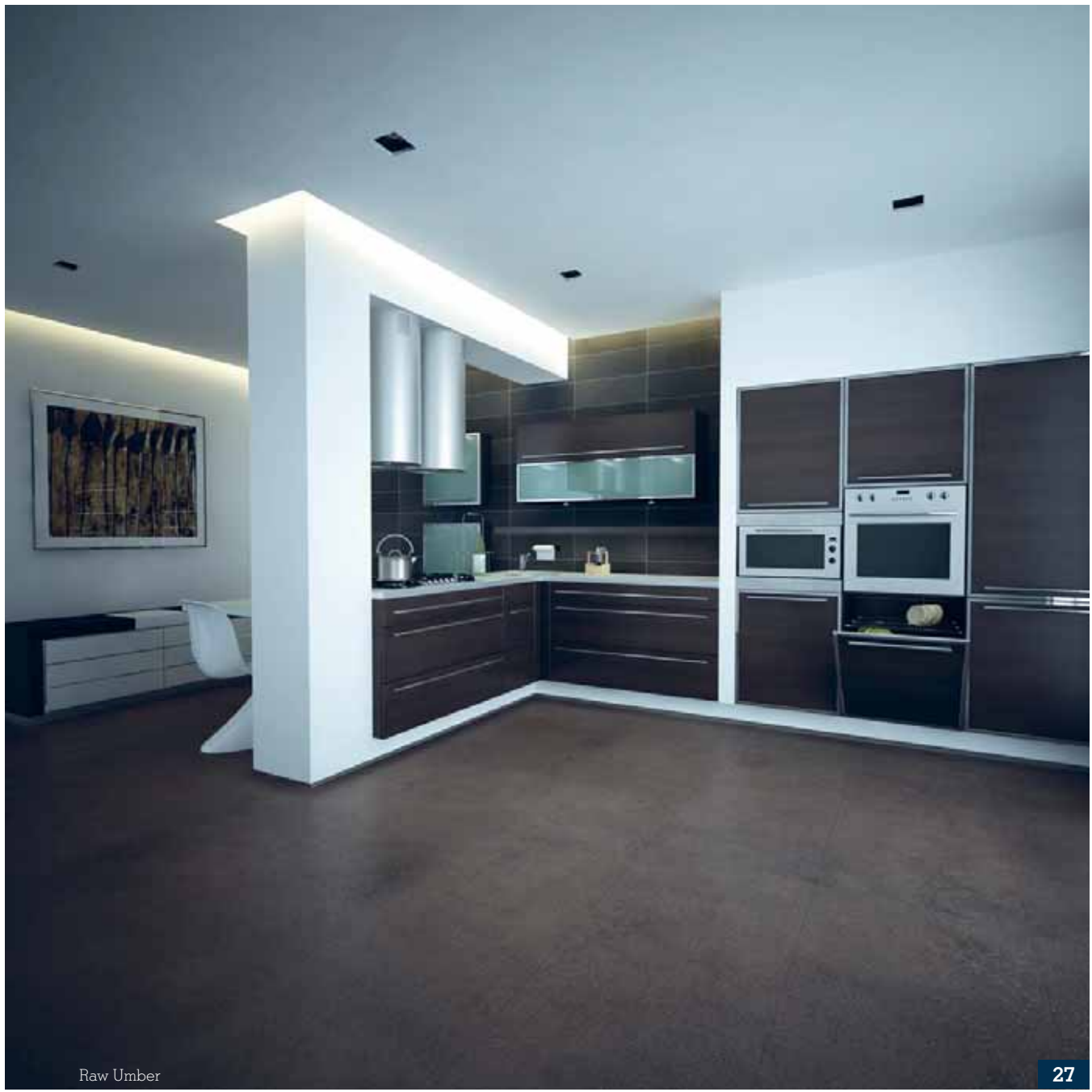
BOO0001



Coal Slate

BOO1001





Technical Solutions

FLOATING FLOOR

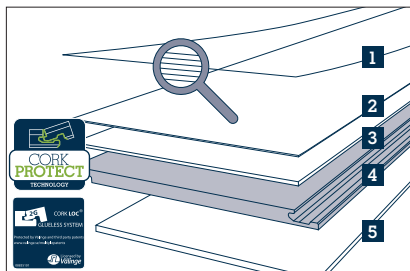
Xtreme WRT
WEAR RESISTANCE TECHNOLOGY

15 YEARS WARRANTY
Residential

5 YEARS WARRANTY
Commercial

Our flooring coated with Xtreme WRT technology is a matte, unique and durable floor requiring low maintenance.

Made with ceramic micro-beads, WRT preserves the natural qualities of your floor by protecting it from abrasion and scratches



- 1.0 XtremeWRT Varnish
 - 1.1 Top coat
 - 1.2 2nd ceramic layer
 - 1.3 Sand sealer
 - 1.4 1st ceramic layer
 - 1.5 filler
 - 1.6 Adhesion promoter
- 2.0 Genuine cork veneer
- 3.0 Flexible and insulating cork layer
- 4.0 HDF - high density fibreboard with CORKLOC®
- 5.0 Integrated insulating cork underlay

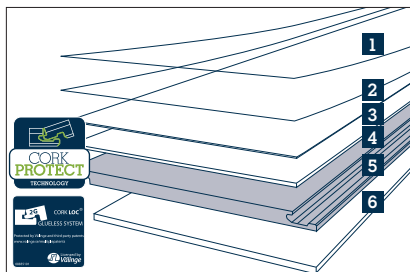
FLOATING FLOOR

HPS Performance Surface

25 YEARS WARRANTY
Residential

15 YEARS WARRANTY
Commercial

HPS finish is based on nano-bead technology. Extremely tiny beads are embedded in the top layer, giving the whole surface improved properties such as scratch, scuff, slip and stain resistance without compromising the natural appearance, elasticity and beauty of the floor. HPS is designed for high traffic areas.



- 1.0 HPS varnish
- 2.0 Hard wearing surface
- 3.0 Genuine cork veneer
- 4.0 Flexible and insulating cork layer
- 5.0 HDF - high density fibreboard with CORKLOC®
- 6.0 Integrated insulating cork underlay

FLOATING FLOOR

15 YEARS WARRANTY
Residential

5 YEARS WARRANTY
Commercial

Vinylcomfort
A revolutionary concept
Wicanders presents a cutting-edge product developed to meet your present expectations and future needs!

Atmospheres full of character

Feel your essence in the room you create. See your personality brought to life through 14 unique references with advanced embossing features so that no detail goes unnoticed.

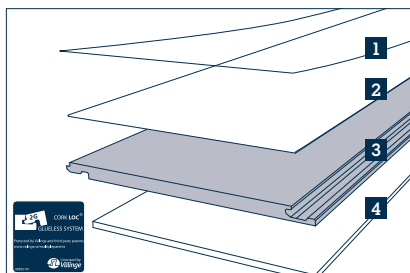
Vinylcomfort will enrich your space with charm and charisma.

Versatility

A floating product combining cork and vinyl, available in two formats conceived for a perfect recreation of the original materials:

35-5/8x11-10/16x13/32 – non-wood visuals

35-5/8x7-9/32x13/32 – wood visuals



- 1.0 Vinyl sheet (with 0.3mm wear layer)
 - 2.0 High density cork core layer
 - 3.0 HDF - High Density Fibreboard with CORKLOC®
 - 4.0 Integrated insulating cork underlay
- All around edge sealing

Specifications

Test	Standard	Unit	Corkcomfort Floating WRT	Corkcomfort Floating HPS	Vinylcomfort PU acrylate UV
Level of use	EN 685	Class	23	23	23
Domestic					
Commercial			31	33	32
Industrial			----	42	----
General properties	EN 12104 / EN 655 / EN 649 / EN 14085				
Dimensions	EN 427 / EN 428	mm • Inches	905x295x10,5 • 35-5/8x11-5/8x13/32 605x445x10,5 • 23-13/16x17-1/8x13/32 910x111x10,5 • 35 7/8x4 3/8x13/32	905x295x12 • 35-5/8x11-5/8x15/32 605x445x12 • 23-13/16x17-1/8x15/32	905x295x10,5 • 35-5/8x11-10/16x13/32 905x185x10,5 • 35-5/8x7-9/32x13/32
Wear layer thickness	EN 429	mm	----	0,50	0,30
Apparent density	EN 672	Kg/m ³	760	825	900
Mass per unit area	EN 430	g/m ²	8000	9900	9800
Dimension stability	EN 434 / EN 669	%	EN 669: Direction 1: 0,00 / Direction 2: 0,01	EN 669: Length: 0,04 / Width: -0,02	EN 434: Length: 0 / Width: 0,05
Flatness (concave)	EN 434	mm	----	----	Initial: 0,5 / After temperature influence: 0,5
Safety properties					
Fire resistance	EN13501-1	Class	Cfl s1	Bfls1	Bfls1
Surface flammability	ASTM D2859	Pass/fail	----	Passes	Passes
Critical radiant flux	ASTM E 648-3	Watts/ Square Cm	.23	0,83	0,74
Specific optical density	ASTM E 662-03	Density	Flaming: 199 / Non flaming: 177	Flaming: 393,8 / Non flaming: 438,3	Flaming: 533,9 / Non flaming: 356,6
Slip classification	EN 14041	Class	DS	DS	----
Sliding coefficient	EN 13893	Coeff.	0,57	----	0,41
	DIN 51130	Class	R-10	R-10	R-9
Slippery safeness	Dresden parameters	Class	Safe	----	----
Static coefficient of friction	ASTM C1028-89	Coeff.	Dry: 0,65; Wet: 0,69	Dry: .69; Wet: .94	----
Additional properties					
Impact sound reduction	ISO 140-8	dB	16	18	16
Step sound	NF S 31 - 074	dB	78	78	81
STC sound transmission class	ASTM E413-87	dB	54	54	----
IIC Impact insulation class	E492-04	dB	58	59	59
Thermal resistance	ASTM C-518-04	(R-value)	----	0,57	----
	EN 12667	m ² K/W	0,102	0,114	0,112
Thermal conductivity	EN 12667	W/mK	0,105	0,106	0,103
Wear resistance	EN 660-2	Nr. of rev./mass loss	----	0,047	2000 / 138,3 mgr.
	ASTM D3884	Cycles/Wheigt loss	----	7300 / 0,00069 grams	----
Residual indentation	ASTM F1914-98	% loss	----	10,6	----
Scratch resistance	EN 438	N	1,60	4	----
Impact resistance	EN 438	N / mm (high falling)	Small ball: 14 / Big ball: 1300	4 / ----	----
Static load limit	ASTM F970-87	Inch. (%)	----	.006 Inch (1,6%)	----
Effect of stains	EN 423	Effect	----	(e)	(a)
Chemical resistance	ASTM F925-97	Surf. dulling	(f) rate 0	(f) rate 0	(f) rate 0
		Surf. attack	----	No change	----
		Color change	----	No change	----
Effect of stains (c)	EN 438, part 2	Grade (b)	5(d)	5/5	----
Formaldehyde emission	DIN EN 717-1/2	mg HCHO/hm ²	2,1	0,6	----
		mg/m ³	0,01	0,01	< 0,01
		ppm	0,01	0,01	----
		Class	E1	E1	E1
VOC emission	CEN ENV 13419 (ECA-IAQ)	Ecological evaluation	Positive	Positive	----

(a) The following products were tested: disinfectant, petroleum, spirit, C2H5OH, NH4OH, citric acid, iodine (unchanged)

(b) 1= surface destruction; 5= no visible changes

(c) The following products were tested: acetone, coffee, NaOH, Hydrogenperoxyde (H2O2, 3%), Black shoe cream, Citrus acid (solution of 10%)

(d) Acetone causes grade 1 effects

(e) The following products were tested: Olive oil, Butter, Condensed milk, Red wine, Petrol, Acetic acid, Soda ash; all cause grade 5 effects (no visible change)

(f) rate 0 = no observed effect. The following products were tested: 5% acetic acid, vinegar, 70% isopropyl alcohol, Mineral oil, NaOH Sodium oxide, 5% HCl Hydrochloric acid, 5% H2SO4 Sulfuric acid, 5% NaOCl Household ammonia, 5% Phenol disinfectant, Kerosene, Olive oil, Unleaded gasoline

Warranty

Extended Structural and Wear Warranty

We warrant, that our flooring products, when supplied as new and through approved outlets, shall be free of defects in lamination, assembly, milling, dimension and grading, and that the Surface Wear Layer will not wear through within the periods, after invoice date, indicated in the table above. The term "wear through" is defined as the 100% reduction of the Surface Wear Layer over an area comprising 5% of the total Surface Flooring installed.

IMPORTANT: The **Wicanders** Warranty is valid if the **Wicanders** Installation and Maintenance instructions that are in the flooring packaging, in the auxiliary products (adhesives, maintenance & cleaning products, etc.) packaging and on the website **www.wicanders.com** are respected. In case of any doubts contact us at: **marketing.ar@amorim.com**

Extended Warranty Coverage

If in the unlikely event our products do not perform according to the applicable warranty, we will, at our option, repair, refinish or replace such portion, with the same product or another product of equal value (at our selection), or refund the price paid - if replacement or repair cannot be made in a timely manner.

A) During the first five (5) years of this warranty we assume liability of removal of defective products and installation of replacement products, **AT NO COST TO YOU**. After this period (when applicable), we shall only provide the flooring products for replacement, according to the lifetime usage table below.

B) The value of replacing flooring is:

Period (years): Warranty coverage:

0-5	100% Flooring Products+Replacing costs
6-10	100% Flooring Products only
11-20	50% Flooring Products only
21-25	25% Flooring Products only

Floor Care

For high moisture areas use Click Seal

Click Seal®

A glueless joint sealant, Click Seal® is designed to be applied on-site to the tongue side of planks, to eliminate core swelling caused by spills and excessive maintenance, and to offer a virtually waterproof floor in kitchens, entryways and other high-moisture environments



Regular Maintenance

Corkcomfort and Vinylcomfort Floating floors

- Vacuum or sweep the floor to remove any loose grit and debris, using a soft, clean brush.
- Do not use any oils or waxes on dust mop
- Use a sponge mop dampened slightly with water or **Wicanders** recommended cleaner (**Wicanders** Soft Cleaner), on a regular basis, to remove any kind of soil and grit. The frequency of cleaning depends on the amount of traffic (daily - weekly)
- Never use anything other than water or **Wicanders** recommend cleaner on your **Wicanders** floor coated with Xtreme WRT or HPS finish.
- You may want to press the mop into a dry towel to remove excess moisture. For heavily soiled floors, use **Wicanders** recommended cleaners only. (**Wicanders** Soft Cleaner).

Tips To Keeping Your Floor Looking Great

- Use doormats at all entrances to remove dirt and grit carried on footwear
- Clean up spills and spots immediately
- Use felt pads on chair and furniture legs and replace them as they wear out
- Furniture castors should have a width proportional to the supported weight
- Use protective office mats under rolling chairs
- If works will take place in the room where the floor is installed, protect with craft paper, plywood or hardboard
- Cork, as a natural material may tend to fade when exposed to sunlight. Use blinds, curtains or other sun screening system to minimize this effect
- Avoid excessive moisture on the floor.
- Ideal and healthy room conditions are 35 - 65% relative humidity at 68°F (20°C).

ON ALL SURFACES, **NEVER**:

- Use latex or rubber backed mats as they can permanently stain the floor.
- Use cleaning products with abrasive ingredients or solvent-based ingredients, e.g. acetone
- Use wire brushes
- Drag furniture across the floor
- Use a wet mop or pour water directly on the floor
- Use wax, polish, or abrasive cleaners, steel wool or scouring powder



AMORIM

Excellence in flooring



Amorim Flooring North America

2600 Cabover Drive, Suite A
Hanover, MD 21076 · USA
Tel: 410 553 6062 (6063 / 6064)
Fax: 410 553 6123
e-mail: info.ar.us@amorim.com
www.wicanders.com

